

I, LOUISE V. ISAACS, CLERK OF THE CIRCUIT COURT OF MARTIN COUNTY, FLORIDA, DO HEREBY CERTIFY THAT THIS PLAT WAS FILED FOR RECORD IN PLAT BOOK 6 PAGE 33 MARTIN COUNTY, FLORIDA PUBLIC RECORDS THIS 13 DAY OF February, 1974

LOUISE V. ISAACS, CLERK
CIRCUIT COURT
MARTIN COUNTY, FLORIDA
BY: *J. de Maupassant*
DEPUTY CLERK

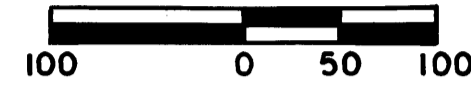
FILE NO. _____

REDMOND MINOR PLAT

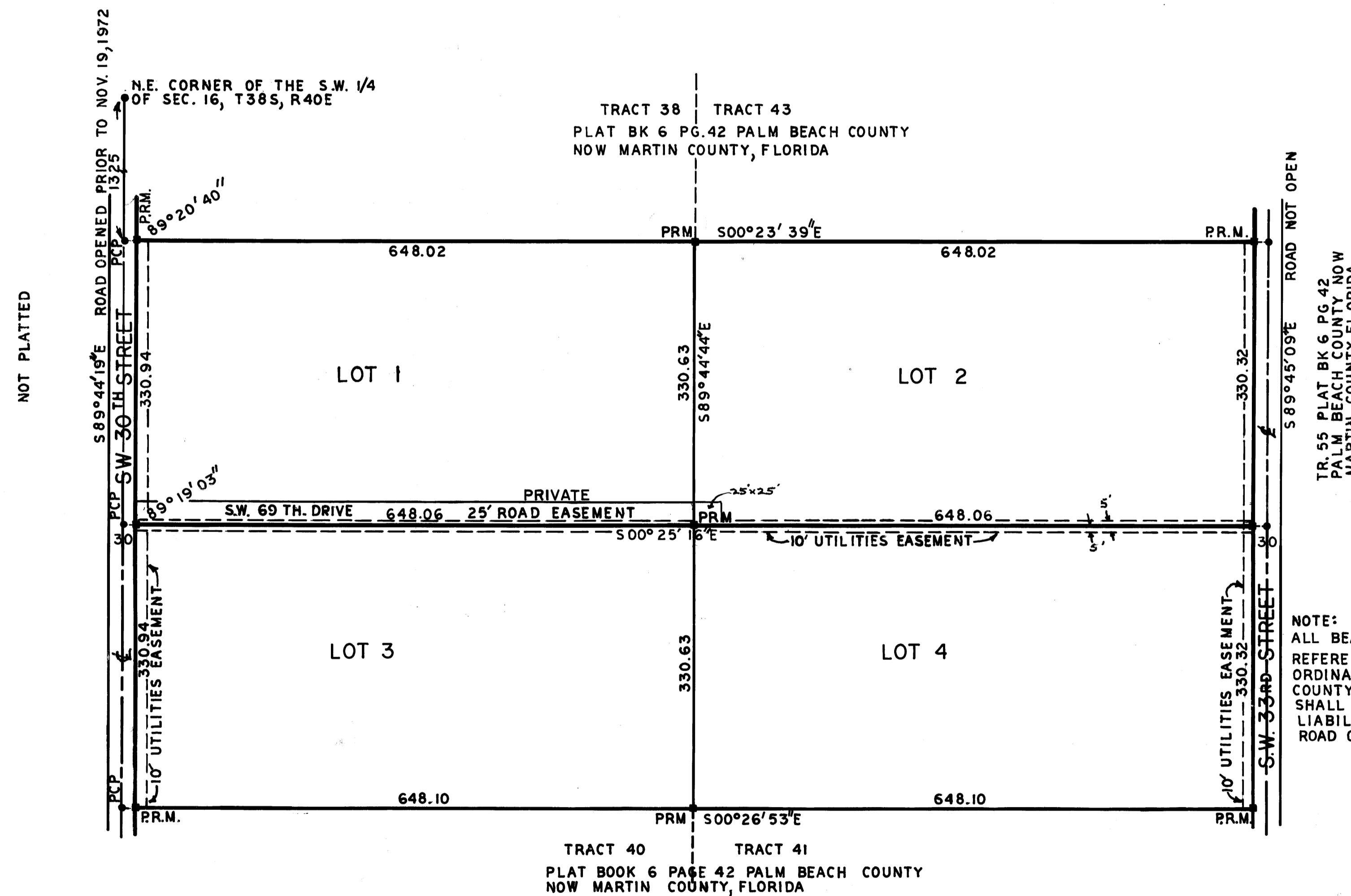
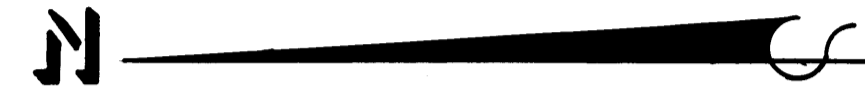
SECTION 16 T38S R40E MARTIN COUNTY, FLORIDA

BEING TRACT 39 AND TRACT 42 SECTION 16 T38S R40E PLAT OF PALM CITY FARMS PLAT BOOK 6, PAGE 42, PUBLIC RECORDS OF PALM BEACH COUNTY NOW MARTIN COUNTY, FLORIDA

DECEMBER 18, 1973



SCALE 1"=100'



CERTIFICATE OF TITLE

STATE OF FLORIDA
COUNTY OF MARTIN
I, STEPHEN FRASIER, A MEMBER OF THE FLORIDA BAR, HEREBY CERTIFY THAT APPARENT RECORD TITLE IS IN THE PERSON, PERSONS, CORPORATION, OR OTHER ENTITY WHICH EXECUTED THE CERTIFICATE OF OWNERSHIP HEREON. DATED THIS 16 DAY OF JANUARY 1974

S. C. Frasier
STEPHEN FRASIER
ATTORNEY AT LAW
310 DENVER AVE.
STUART, FLORIDA

CERTIFICATION

STATE OF FLORIDA
COUNTY OF MARTIN
I, RANDELL E. FISHER, DO HEREBY CERTIFY THAT THIS PLAT OF REDMOND MINOR PLAT IS A TRUE AND CORRECT REPRESENTATION OF THE LANDS SURVEYED, THAT SAID SURVEY WAS MADE UNDER MY SUPERVISION AND THAT THE SURVEY DATA COMPLIES WITH ALL OF THE REQUIREMENTS OF CHAPTER 177, FLORIDA STATUTES.

Randell E. Fisher
RANDELL E. FISHER
FLORIDA SURVEYOR
CERTIFICATION NO. 1946

APPROVAL

STATE OF FLORIDA
COUNTY OF MARTIN
THIS PLAT IS HEREBY APPROVED BY THE UNDERSIGNED ON THE DATE OR DATES INDICATED.

Feb 4, 1974 *Kenneth J. Ferraro*
DATE COUNTY ENGINEER

Feb 4, 1974 *V. Leonard*
DATE PLANNING DIRECTOR

Feb 4, 1974 *Stephen B. Colbert*
DATE COUNTY ATTORNEY

CERTIFICATE OF OWNERSHIP

STATE OF FLORIDA
COUNTY OF MARTIN
WE, ARTHUR QUINN JR., AS TRUSTEE AND JOINED BY VIRGINIA QUINN, HIS WIFE, DO HEREBY CERTIFY THAT WE ARE THE OWNERS OF THE PROPERTY DESCRIBED HEREON.

Arthur Quinn
ARTHUR QUINN, HUSBAND

Virginia Quinn
VIRGINIA QUINN, WIFE

RANDELL E. FISHER
SURVEYOR

STUART ♦ FLORIDA